

A Visual Guide

What to expect in Wonderland

This pack is designed to help familiarise you and your group/family with Adventures in Wonderland. It highlights lighting, sounds, and themes and some useful info for your visit.

When you arrive -

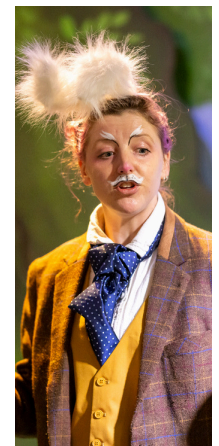
Check in at the Box Office, and our team will guide you to the café until it's time for your experience.

The team will let you know when it's time to enter Wonderland. You'll get a quick intro from Z-arts, then it's over to our Story Explorer – the White Rabbit!

The White Rabbit is played by different Story Explorers, each bringing their own magic! They'll guide you through Wonderland from start to finish.



Our staff will be in a purple Z-arts t-shirt.



Some of our Story Explorers, who play the White Rabbit!



Adventures in Wonderland is an interactive play experience, with lots to see and do!

What to expect -

Your adventure begins with a 10-minute interactive story led by the White Rabbit – the perfect start before heading down the rabbit hole!

The experience lasts around 60 minutes with no interval.

We usually run three timed sessions per day, so it's important to arrive on time – late arrivals may miss out on the full adventure!

If you need to leave during the experience, that's ok. You can come back in when you're ready.



After heading down the rabbit hole -

You're off into Wonderland! For the next 50 minutes, it's all free play – explore, imagine, and enjoy the experience your way.

Need the loo or some quiet time?

No problem! Just head back to the doors you came in through and ask our friendly Box Office team for directions.

When does it finish?

You'll know the experience is coming to an end when the music changes and the White Rabbit calls everyone back to the Riverbank.



During the experience -

You'll start on the Riverbank, where the White Rabbit will appear and introduce themselves.

They might ask you to join in, it's okay if you don't want to.

There is a lot to see and do during the experience.

If you need a little break that's okay.

There are some loud noises during the experience.

There is also music throughout and other noises, some of which happen when you press buttons.

There are loads of different lights throughout the experience.

Some of them are dark and some are brighter, they are fun and cool to look at.

There are lots of things to play with, but you don't have to play with everything!

Feel free play with whatever takes your fancy.

There is a an activity sheet you can fill in.

If you need help just ask the White Rabbit!

At the end of the experience, the White Rabbit will get everyone together to talk about what they have been doing.

You don't have to talk if you don't want to!

Themes -



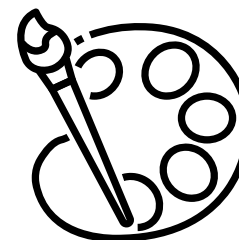
Exploration



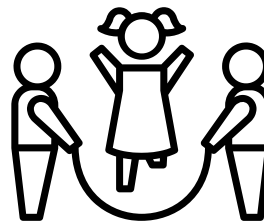
Mystery



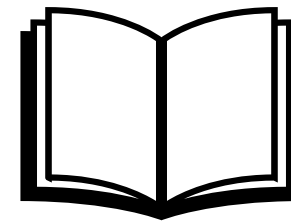
Being yourself



Creativity



Play



Stories



Relaxed Performances

We understand that families may want to explore Wonderland in a more relaxed, calm environment.

Our Relaxed Performances provide a safe and supportive experience, where you can enjoy the experience at your own pace, with adjustments made to ensure everyone's visit to Z-arts is as enjoyable as possible and we try our best to cater to everyone's needs.

What to expect:

- A relaxed, super chilled atmosphere
- Reduced audience capacity for extra space
- Led by an experienced Story Explorer who specialises in SEND
- Quieter sound effects
- A dedicated quiet space for breaks
- Fidget toys available
- Ear defenders provided

If you have any questions, please don't hesitate to get in touch with us at 0161 226 1912 | boxoffice@z-arts.org

Accessibility Information:

- Box Office is street-level, with a ramp for easy access
- Z-café is accessible via an outdoor lift or the ramp from the Box Office entrance
- Z-café also has an accessible toilet



These are some pictures from inside Adventures in Wonderland
- this gives you an idea of what to expect.



These are some pictures from inside Adventures in Wonderland
- this gives you an idea of what to expect.

