

# Punk Alley

*Pre-Show  
Access  
Information*



# Welcome to Punk Alley!

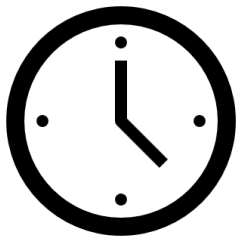


Here are a few things that you can expect in the show.



This is a **relaxed performance**.

So you can get up, go to the loo, stim, make noise, whatever you need to do to feel comfortable in the space.



The show will be **1 hour** long. There is **no interval**.



There will be **BSL interpretation** throughout the show.

**Screens on stage** will show the **lyrics** to the songs in written English.





We are Lazurr Tuts - a punk band!  
In the show, we'll be playing **LIVE MUSIC**. There will be **LOUD NOISES** from guitars, singing and speakers.



There will be **ear defenders** available for anyone who needs them. If you have your own, please use them!



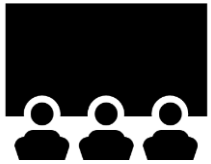
There is also some **audience interaction**. Everyone is invited to join in creating songs, writing placards, and playing music. But you can participate, or not participate, in any way you choose.

**There is no pressure.**





At times there will be **BRIGHT** and **FLASHING LIGHTS**, and **sometimes the stage will go dark** (but not completely).



In the beginning of the show we will show you how loud we go, and how bright and dark it will be.



There will also be water-based **haze** on stage.





Punk Alley directly engages with children and asks for their thoughts, questions and ideas about the world around them.

Themes and issues that *may* arise in the show include **Climate change, Disability, LGBTQIA+ identities, Race, Politics, Education, Family and friends.**



There will also be lots of **visually stimulating content**. The show is a joyride of high energy music and dance for the whole family, and has a **happy, empowering ending!**



## ----- Spoilers Below! -----



- *In the final song 'Foot Flowers', there will be a flower petal drop, where colourful flowers will fall **gently and quietly** from up high onto the band onstage.*
- *Towards the end of the show, a long sheet of **paper will be printed from high up and lowered onto the stage. It makes whirring noises as it prints.***
- *At the end of the show, **we will invite the audience to join us outside the theatre, to post our gold envelope at the nearest post box!** There is no pressure at all to join us and you are welcome to either watch from a distance, or leave the theatre and start your journey home.*

***If there is no post box nearby, we will post it in a postbag inside the theatre, and the band will take it to a post box after the show.***



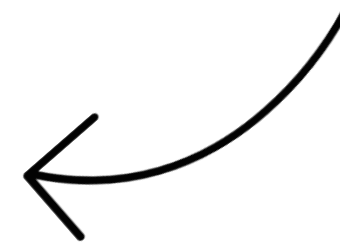
When you see this symbol on the screens, that means that in **5 seconds**, the sound and light are going to be at their **most intense.**



# Punk Alley



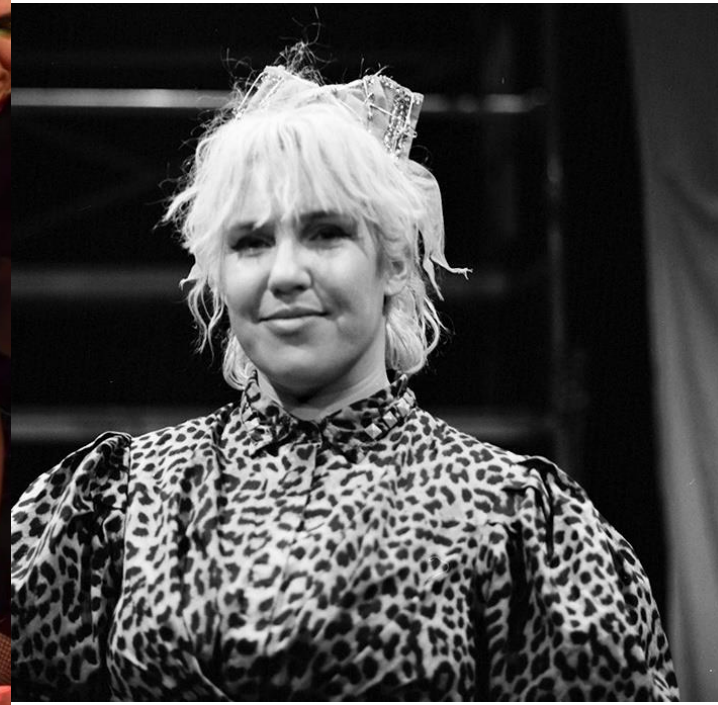
We'd also like to introduce you to the members of our band, the **Lazurr Tuts!**



# STARDUST

This is StarDust (she/her).  
She's one of the singers of the band.

When she's on stage, it's a big kerfuffle of energy and that's why she's got those big shoulder pads!



StarDust has blonde hair and she wears a purple leopard-print shirt, purple shorts, fishnet tights and black boots.



## RAKE

This is Rake (they/them).

Rake is not a boy or girl.  
They play bass and might be the tallest  
person in Punk Alley!

Rake wears a dress made of chalkboard  
material, a silky purple cape, netted tights  
and black boots.

They have pink hair and green eye makeup.

# TINAMOU

This is Tinamou (she/her).

She plays drums in the band and keeps her tambourine in the back of her wheelchair so she's always ready to jam.

Tina is also an inventor!  
She has brown hair and wears a black leather jacket with purple fringe, a green netted shirt and black trousers.





**ZED**

This is Zed (she/her).

Zed plays electric guitar!  
She wears a denim skirt with patches on it with all her favourite causes and bands on - Bikini Kill, Kate Nash, and PJ Harvey.

Zed has black hair and also wears a burgundy polo shirt and black boots.



# AKOMA

This is Akoma (she/her).

She is one of the singers of the band. Akoma's very expressive and loves to dance.

She wears a black leather jacket with long fringes/tassels under her arms. She wears the jacket over an orange dress.

Akoma also wears netted tights, black boots and ties some of her hair up in buns, in a mohawk-style.



# EMILIE

This is Emilie (she/her).

She is our sign language interpreter.  
She gets right in the middle of it all  
and she makes everything so much  
clearer.

Emilie wears a black t-shirt, with  
blue jeans that says 'Scream the  
House Down' on her left leg.  
Emilie sometimes has black hair  
and a green ponytail.  
She sometimes likes to dye her  
hair blonde too!





## THE MAGIC BAROMETER

This is the Magic Barometer.  
It was invented by Tina!

The Magic Barometer is very tall and is made of all sorts of interesting things – teddy bears, metal cans, nets, musical instruments, lights, wires and more. It makes sounds and turns on its lights when it's excited and encourages the band throughout the show!



# The Set



- The centre of the stage has a big, very **tall metal scaffold** structure, which the band use to climb up and dance on.
- **Long pink banners** can be hung from the scaffolding. The banners have ‘we can use our voices’ and ‘we can make some noise’ written in black text.
- There is a **big green circle on the floor** – dance mat flooring - that the band can stand and dance on.

# The Set

- The **Magic Barometer** is to the right of the scaffolding.
- There are **two speakers on two black and silver tables** on the left and right of the scaffolding. One of them is an amp that says '**Marshall**' on the front in silver writing.
- There are also **two black and silver trolleys**. At the beginning of the show, this holds some **t-shirts and flags** that we give out to the audience! Then it gets cleared away.





## The Set

- There are long purple, pink, orange, and red netted **cloth** on the sides of the stage.
- The band **hide under the cloth, stretch them across the stage and dance under them** to turn into their inner Monsters!



## The Set


- There are **two TV screens** on both sides of the stage. During the songs, you can see all the **lyrics** on screen! And this is where the **rock hand symbol appears**, so you know in 5 seconds, the sound and lighting will be at its most intense.
- In front of your seats, there is a **line of black flags/bunting** made of chalkboard fabric that **you can write and draw on**.
- During the show, **all the flags get lifted carefully over your heads** and gets draped all over the stage, from the scaffolding to the trolleys.



We're so happy to have you here with us!  
**If you have any questions, please ask.**



# **Punk Alley**



***We hope you enjoy the show!***