



# **WHEN WE STARTED SINGING VISUAL GUIDE**

# What is a Visual Guide?

A visual guide gives you lots of information about Z-arts and the show you are going to see, using pictures and accessible text.

They are suitable for anyone who would benefit from a clear and accessible introduction to Z-arts and the show you have booked to see.



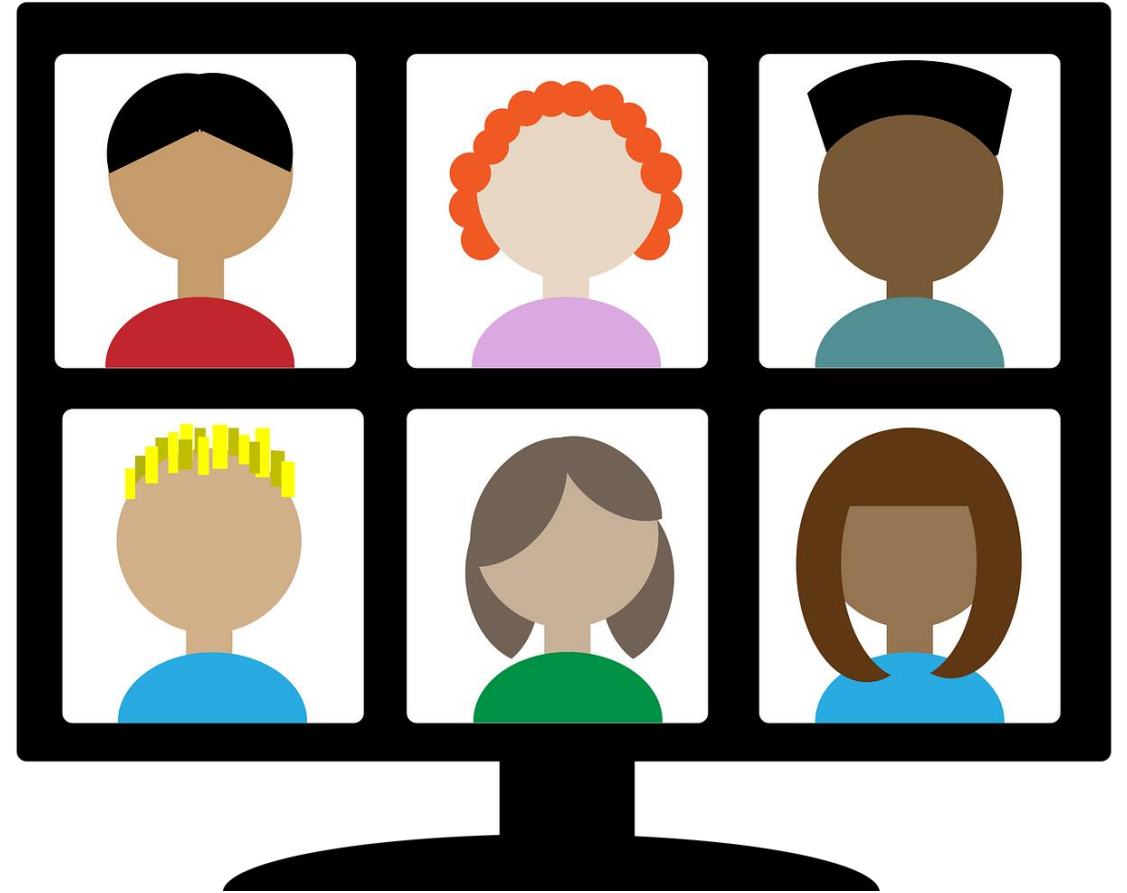
# How Do I Watch The Show?

You will be sent a Zoom link.

When you click on the link, you will be taken to a waiting room.

You will enter the Zoom call when the show is about to begin.

New to Zoom? We have a Zoom guide on our website: [How to join us for Zoom sessions - Z-arts \(z-arts.org\)](https://z-arts.org)



# Who will be in the show?



This is Mr Popple.  
Mr Popple is a kind, elderly man.



Mr Popple lives alone with  
his pet tortoise, Tommy.

# Who will be in the show?



You will meet Mr Popple's neighbours as well!

# What to expect in the show

Mr Popple sets out to share some joy with his neighbours during lockdown.

His acts of kindness transform strangers into friends (and pop stars!) and a community is born!

There is a BSL version of the film.



# Do you have any other questions about the show?

Please get in touch!



@Z\_arts\_mcr #BIDigiFest



[tiffany@z-arts.org](mailto:tiffany@z-arts.org)

**We hope you enjoy the show!**