



TEACH REX

Visual Guide

What is a Visual Guide?

A visual guide gives you lots of information about Z-arts and the show you are going to see, using pictures and accessible text.

They are suitable for anyone who would benefit from a clear and accessible introduction to Z-arts and the show.

Contents

Page 3 - Getting to Z-arts.

Page 4 – Box Office: Collecting tickets and ear defenders.

Page 6-7 - How to get to the café and order food.

Page 8-9 - Where the toilets are.

Page 10-11 - How to get to where the show will be.

Page 12-15 – Information about the show I am going to see.

Page 16-17 - What happens when the show is finished.

Getting to Z-arts

Z-arts looks like this. It is opposite Hulme Park.

When you enter Z-arts, you will see a sign, some plants, some fish and some steps. On your left, there is a ramp. If you go up the ramp or up the steps, you will get to our Box Office desk.



Box Office

A member of staff will be behind the Box Office desk to greet you.

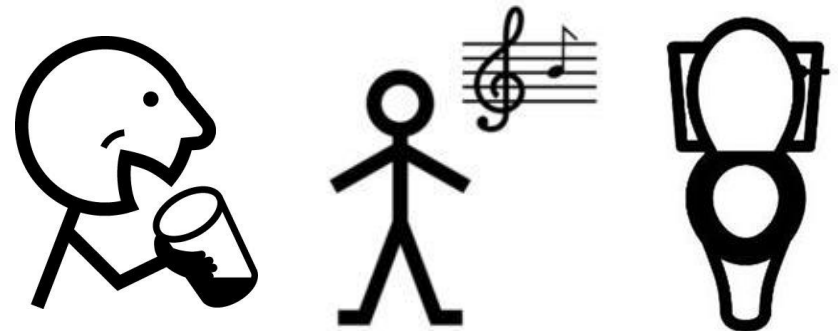
In the photo on the right, you can see Box Office Supervisor Paul. Paul works at Box Office a lot during the week. Here you can let Z-arts staff know you have arrived for the show.



There are ear defenders available for all ages and in all sizes. Please speak to our Box Office for more details or to request a set.



Staff have a keyring with laminated Makaton cards attached. The Makaton cards have simple images and symbols that you can use to help communicate with our staff.



Z-arts Café

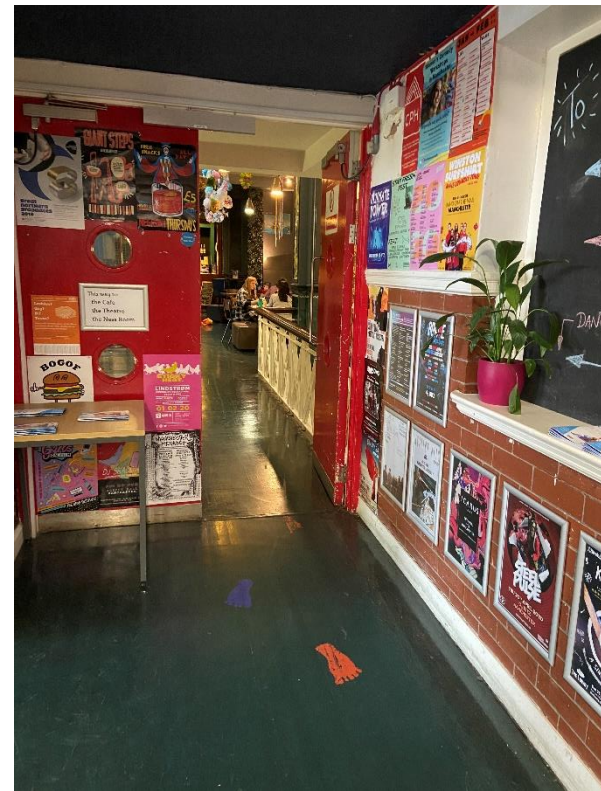
If you look to your left when you're standing facing the Box Office desk, there is a corridor with lots of posters.

This takes you through to Z-café.

Z-arts café has lots of chairs and tables.

You can buy food and drink from the counter.

In the picture, the café is empty, but it can sometimes be busy and noisy, particularly on a Saturday.



You can ask the Z-arts staff member behind the counter anything about the café and what it has to offer.

There is a visual menu available at the café. This is a printed menu with pictures and large print. You can take this to your table if you would like to use it. Ask a café staff member for one.

Accessible cutlery is also available. The cutlery has large easy grip, latex-free rubber handles. The spoon and fork have bendable shafts that bend for left or right-handed use. Ask a café staff member for cutlery.



DISHES AND THEIR ALLERGEN CONTENT – Z-ARTS CAFÉ BREAKFAST MENU

DISHES	Celery	Citrus, tree nuts, gluten	Crustaceans	Eggs	Fish	Lupin	Milk	Molluscs	Mustard	Soya	Sesame seeds	Sulphur dioxide
BREAKFAST BAGEL WITH SALMON AND CHEESE SLICE				✓								✓
ANY BREAKFAST BAGEL WITH AVOCADO AND CREAM CHEESE		✓					✓					✓
TOAST WITH SMASHED AVOCADO		✓										✓
TOAST WITH SPREAD – CHECK INDIVIDUAL SPREAD PACKETS		✓										✓
SATURDAY SUNDAY							✓					
ANY SUNDAY SUNDAY							✓					

Review date: 30.01.19 Reviewed by: Laura Monk

WE CAN MAKE ANY OF OUR DISHES PALETTE WITH GLUTEN FREE BREAD!

Food for Thought logo

There are boys' and girls' toilets and an accessible toilet in Z-café. They are on the left when you are facing the counter.



There is a sign above the entrance way to the toilets. When you go through and turn to your right, you will be in a small corridor.



The doors to the toilets have signs on to show you which toilets are for boys and girls.

The accessible toilet is a little further along the corridor. It is on the left next to the boys' toilets.

The accessible toilet has a sign on it to show you that it is the accessible toilet.



The Theatre

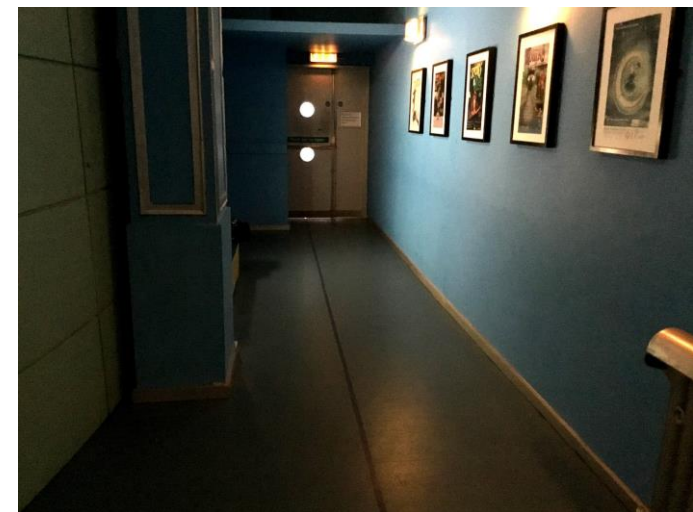
In the café, next to the play area, there is a black door with two windows.

A Z-arts staff member will let you know when you can go through this door.



When you go through the black door with two windows, you will go into a corridor. The lighting in this corridor is dull.

When you get to the end of the corridor, there will be a door on your left. This will take you through to the theatre.



The theatre is where shows happen.

When you get into the theatre, it may be a little darker than in other rooms, but there will be lights and lots of seats.

Z-arts staff will let you know where to sit.

There will be staff members who you can talk to or ask for any guidance.

The show is about to start!



What to Expect in TEACH REX

This is Joe, Tom and Sam.


They are performers.

TEACHREX
• NEW AGE EDUCATION •



NAME JOE
AGE 27
SPECIES OMNIVORE
INTERESTS CARDIO
LOOKS 6
SPEED 3
STRENGTH 6
INTELLIGENCE 7
KILLER RATING 4

TEACHREX
• NEW AGE EDUCATION •



NAME TOM
AGE 27
SPECIES HERBIVORE
INTERESTS LIVERPOOL FC
LOOKS 4
SPEED -1
STRENGTH 10
INTELLIGENCE 4
KILLER RATING 9

TEACHREX
• NEW AGE EDUCATION •




NAME SAM
AGE 29
SPECIES OMNIVORE
INTERESTS WEDDING TALK
LOOKS 8
SPEED 10
STRENGTH 2
INTELLIGENCE 8
KILLER RATING 4

This is Hairy Jam and
Old Jam.


They are Dinosaurs.

TEACHREX
• NEW AGE EDUCATION •



NAME	HAIRY JAM
AGE	65 MILLION YEARS
SPECIES	CARNIVOROUS DINOSAUR
INTERESTS	WAXING HIS LEGS
LOOKS	7
SPEED	10
STRENGTH	8
INTELLIGENCE	3
KILLER RATING	10

TEACHREX
• NEW AGE EDUCATION •



NAME	OLD JAM
AGE	68 MILLION YEARS
SPECIES	CARNIVOROUS DINOSAUR
INTERESTS	SLEEPING
LOOKS	4
SPEED	3
STRENGTH	8
INTELLIGENCE	10
KILLER RATING	6

You and the other audience members will be asked to shout “come out Jam” three or four times and then the dinosaur will appear.

The show has interactive games and there’s also a roaring competition!



In the show, there are jungle noises,
birds tweeting, rain sounds and dinosaur roars!

There is smoke at the beginning of the show. This
is made by a machine and is perfectly safe.

The lighting changes a lot during the
show. The lighting is mainly green,
and it flickers when the first dinosaur appears.



At the end of the show, the performers may join hands and bow. When this happens, the audience might clap their hands, whistle or cheer to show they have enjoyed the performance.

You can join in with them if you like, but you don't have to.



You can meet the dinosaurs after the show if you would like to.

You may have to wait patiently if there are lots of people who want to meet the dinosaurs.

There will be Z-arts staff in the theatre to help you if you need anything before you leave Z-arts.

