



Z-arts Technical Specification

Z-arts
335 Stretford Road
Manchester
M15 5ZA

Telephone: 0161 232 6079

Email: stacey@z-arts.org

Technical Manager: Stacey Choudhury-Potter

Table of Contents

LX Control and Luminaries.....	3
Sound.....	5
Stage Dimensions.....	7
Images of the Theatre	8
Load in & Parking info	11
Standard Rig Plan.....	13
Blank Grid Plan.....	17
Health and Safety.....	18

LX Control

- ETC Element
- 96 2.5K CompuDim by CompuLite Dimmers, Hard Patched

Luminaries – Theatre

Fresnel's

- 3 X Robert Juliat, 329HF - **2.5KW**/ Fresnel with Barn doors
http://www.robertjuliat.com/Product_Specifications/Fiches_EN/Standard/DSEN023_329HF.pdf
- 3 X Philips Selecon, Arena Theatre Fresnel - **2.5KW**
Fresnel with Barn doors
http://www.strandlighting.com/clientuploads/directory/downloads/selecon_arena_theatre_fresnel%20230V.pdf
- 11 X Robert Juliat 310HF **1.2KW** Fresnel with Barn doors
http://www.robertjuliat.com/Product_Specifications/Fiches_EN/Standard/DSEN005_310HF.pdf
- 14 X Robert Juliat 310HPC **1.2KW** PC with Barn doors
http://www.robertjuliat.com/Product_Specifications/Fiches_EN/Standard/DSEN007_310HPC.pdf
- 6 X Selecon Fresnel **1.2KW** Fresnel with Barn doors
http://www.seleconlight.com/images/stories/files/discontinued/metric/1200_fresnel.pdf
- 6 X Selecon Acclaim **650W** Fresnel
<http://www.dbn.co.uk/wp-content/uploads/2011/06/Selecon-Acclaim-Fresnel-Manual.pdf>

Zoom Profiles

- 8 X Robert Juliat **1.2KW** Profile 613 28/54
http://www.robertjuliati.com/Product_Specifications/Fiches_EN/Standard/DSEN045_613SX.pdf
- 8 X Robert Juliat **1.2KW** Profile 614 16/35
http://www.robertjuliati.com/Product_Specifications/Fiches_EN/Standard/DSEN049_614SX.pdf
- 12 X Selecon **1.2KW** Profiles 28/52 Zoomspot
<http://www.seleconlight.com/classic/files/english/1200%20zoomspot.pdf>

Other

- 17x 750w ETC Source 4 Par with selection of lenses
<http://alss1.com/wp-content/uploads/2013/08/S4-PAR.pdf>
- 10x 650w ETC Source 4 Par with selection of lenses
<http://alss1.com/wp-content/uploads/2013/08/S4-PAR.pdf>
- 4 X Selecon 4 way 1.2K Cyc Batons
http://www.seleconlight.com/index.php?option=com_virtuemart&page=shop.product_details&flypage=shop.flypage.p3&category_id=129&product_id=57

Sound - Theatre

Theatre

- 1 X Allen & Heath SQ-6 Digital Mix Console
<http://www.allen-heath.com/ahproducts/sq-6/>
- 1 X Twin CD Player
- 3 X Nexo 'PSTD' Controller
- 2 X Nexo DTD-AMP4x0.7
- 1 X Crown 'K2' Power Amplifiers
- 4 X Nexo 'PS10' Speakers (FIXED FOH)
- 4 X Nexo 'Ls500' Sub Bass Speakers (FIXED FOH)
- 2 X Achat 110W Power Speakers (Monitors)

Microphones

- 4 x Sennheiser EW100 Receivers; 4 x Sennheiser SK100 Bodypack Transmitters; 4 x Headset Mics
- 2 x Sennheiser E845 Super Cardioid Vocal Mic
- 2 x Shure SM58
- 2 X Shure Beta 58
- 1 x Rode M2 Hand held Condenser
- 2 x Rode M5 Condensers

D.I. Boxes

- 1 X ProAV2 (Stereo) DI Box
- 1 X Stereo D.I. Box

Audio Interface

- Focusrite Saffire Pro 24

Please note FoH sound system is hardwired, for more information please discuss.

Sound - Portable

- 2 X JBL Eon10 110W Power Speakers

Other

- 4 Boom Microphone Stands
- 1 X Allen and Heath 14/4/2 Channel Mix Console
- 2 X Opal 30 Band Graphic Equalisers
- 1 X Yamaha 'REV500' Digital Reverberator

A.V.

- Vivitek DX6831 DLP 3D Projector 8k lumen
<http://www.vivitek.eu/Category/Discontinued-Projectors/123/DX6831->
- Optoma X303 3D Projector 3k lumen
- Projection Screen / CYC / 8m wide / 5m High / Fixed Upstage Retractable
- QLAB 3 for playback

Playback Computer

OS X Yosemite

iMac (21.5 – Inch, Late 2013)

Processor 2.9Ghz Intel Core i5

Memory 16GB 1600 MHz DDR3

Graphics NVIDIA GeForce GT 750M 1024 MB

Unique Hazer

Stage Dimensions

Seating bank to CYC (minus temporary ground row)

- 10.5m Depth
- 14.71m Width
- 5.5m Height to TWG (Tension Wire Grid)
- 6.7m Height to IWB

Setting line to CYC

- 8.8m Depth

Setting line to back wall (CYC retracted)

- 9.1m Depth

Seating Retracted

- 17m Depth
- 14.71m Width
- 11.25m Width from retracted stairs left and right

Scene Dock

- 4.24m Depth
- 5m Width

Full length Cyc Up stage for projection.

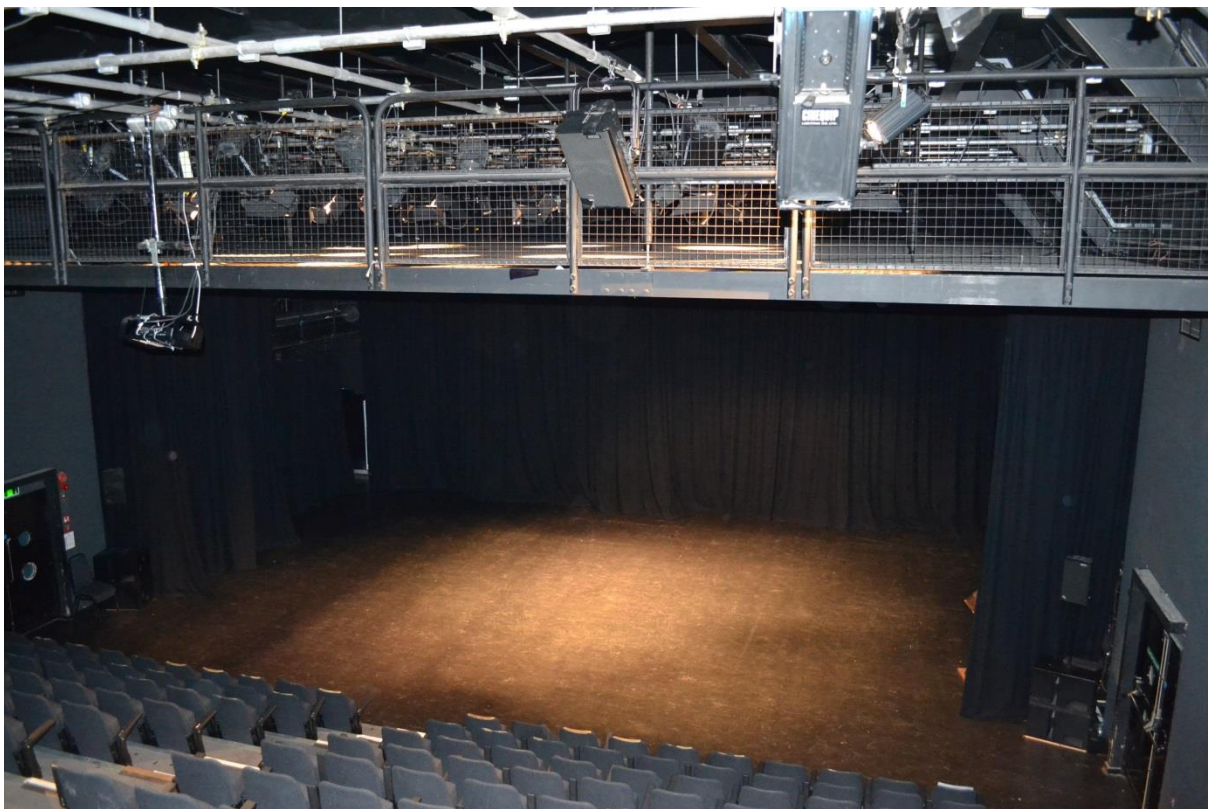
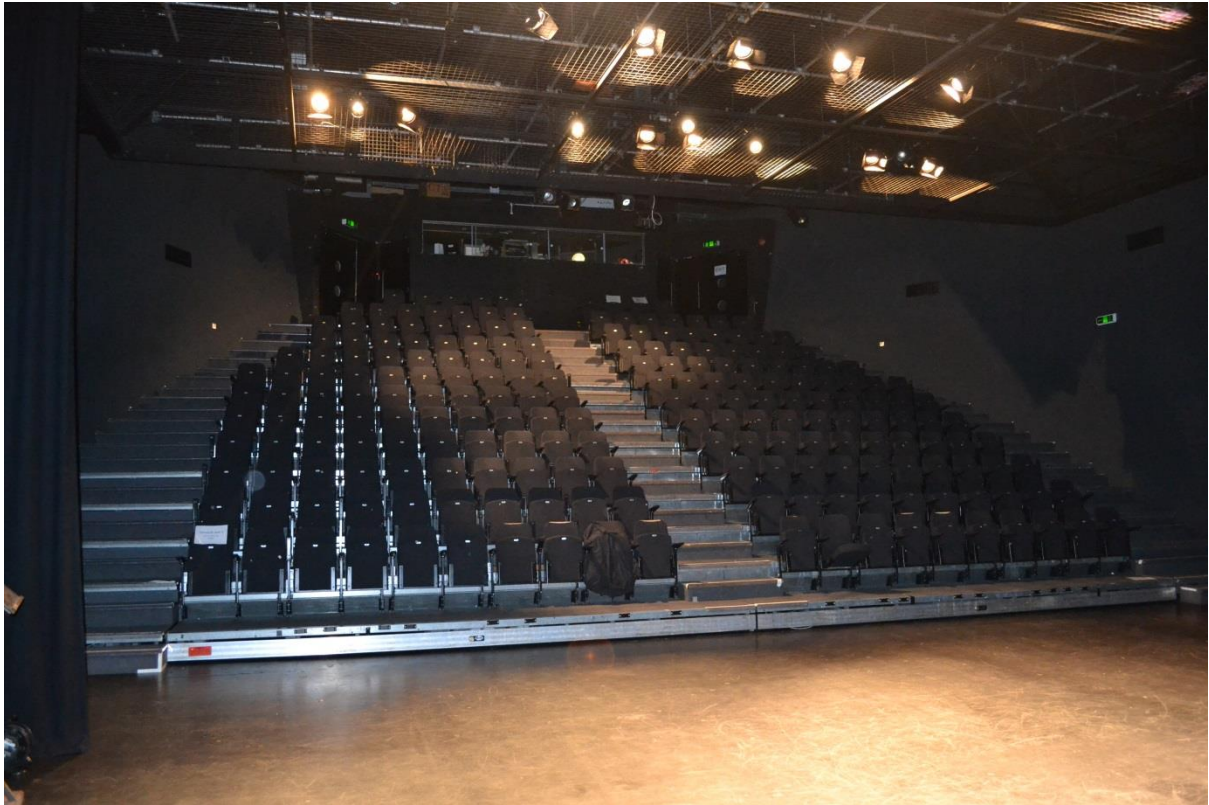
Seating Bank = 213

Maximum Seating capacity (Bank + temporary ground row) =
225

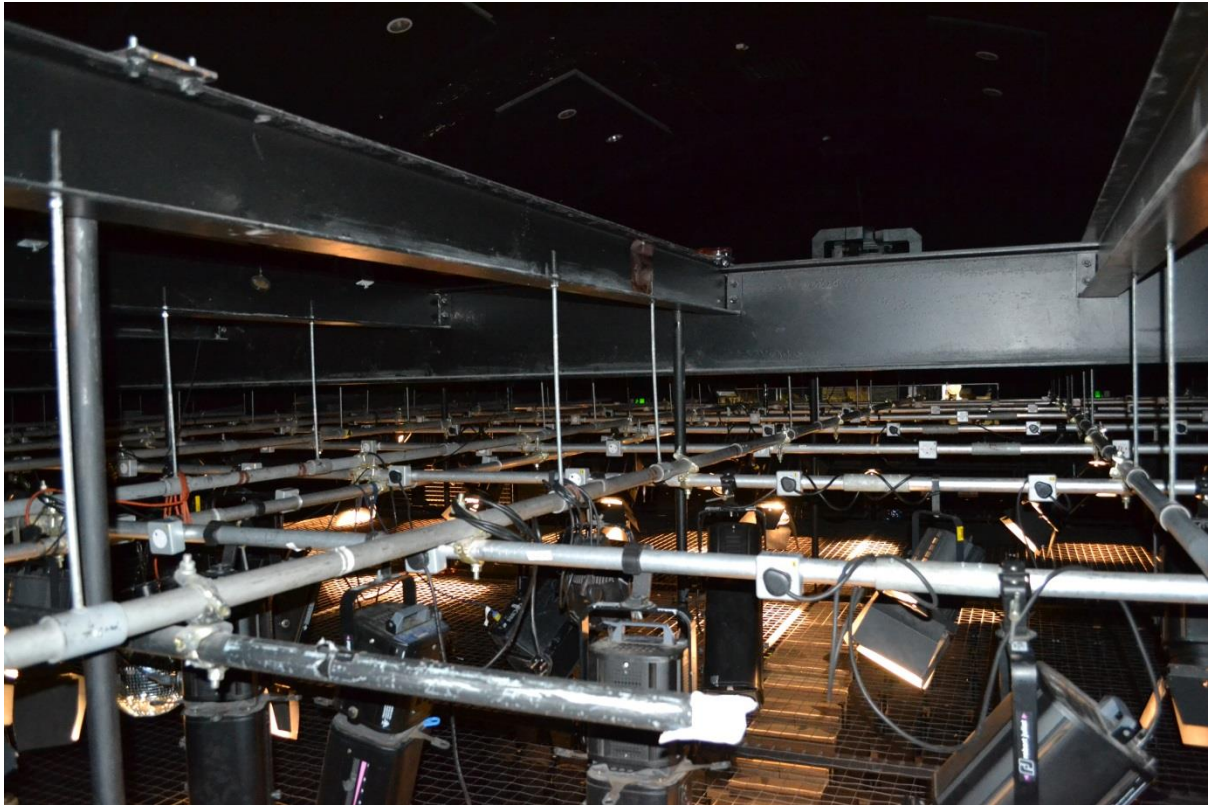
**Please note: maximum seating capacity includes temporary ground row on stage floor.*

Approximate Standing Capacity = 300

Images of the Theatre



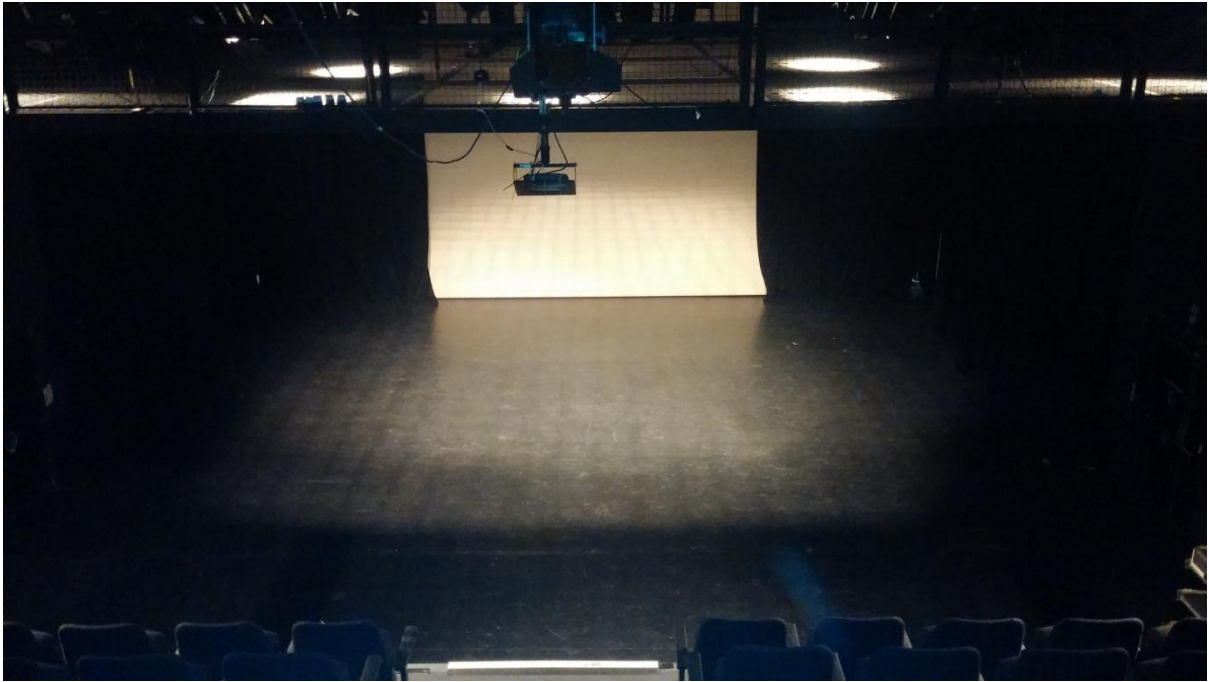
In the grid



From Control Position



Stage with Seating retracted



Load in (Ancroft Street, off Ellis Street, M15 5JW, rear of building).

Pay & display parking Monday – Friday. Free parking between the hours of 6pm Friday – 8am Monday.

Please park in the designated loading bay for your get in. Once complete you will need to move to a pay and display bay in the surrounding area.

Dock Doors





Doors

2.4m (7'9") Width

3.2m (10'5") Height

Lift

1.4m (4'6") Width

1.5m (4'9") Depth

Stairs

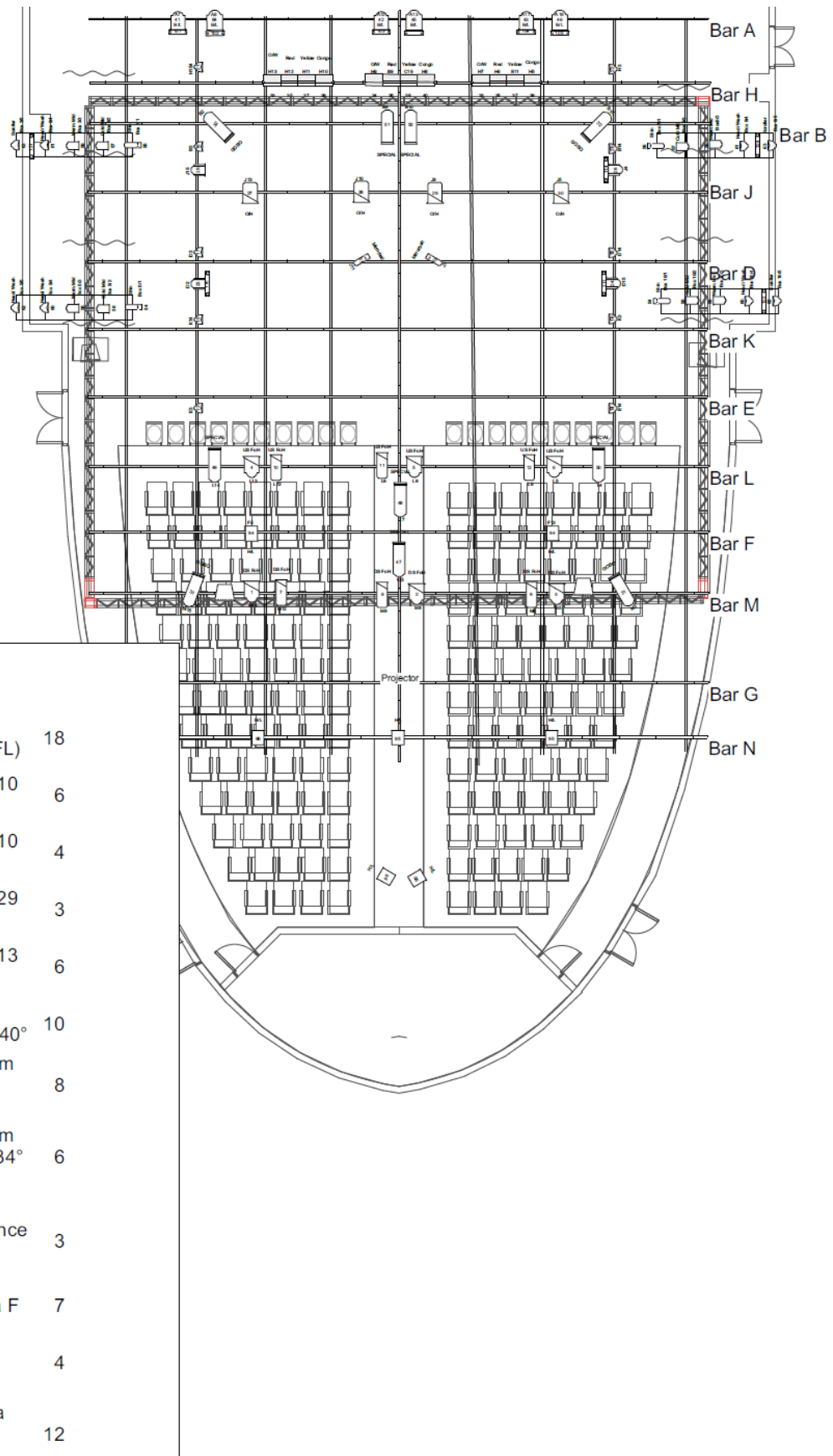
1.1m (3'6") Width

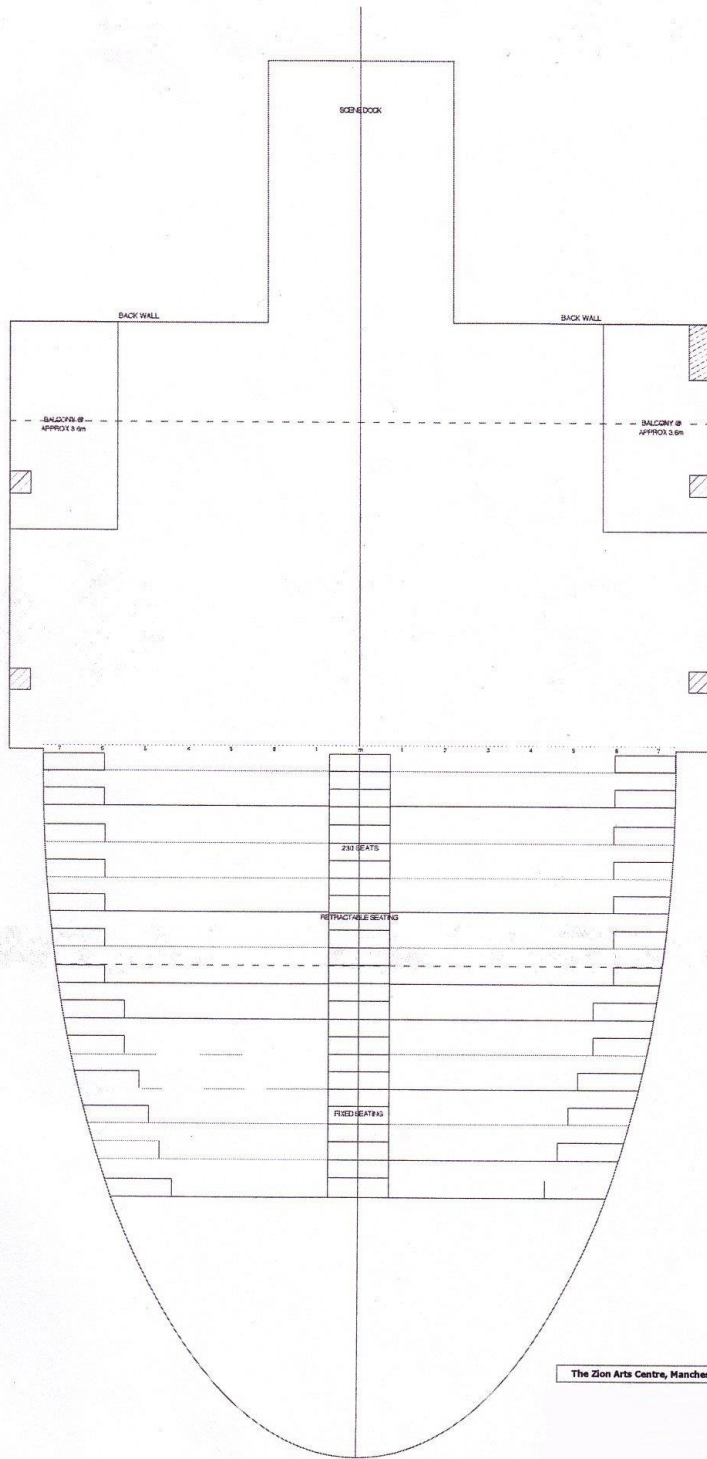
Dock

4.25m (13'95") Depth (from top of stairs and lift)

5m (16'4") Width

Standard rig





Bar 13



A

A

A/2 A/3 A/1 A/5 A/4 A/6 A/8 A/9 A/10 A/7 A/12 A/11

A/13 A/15 A/16 A/17 A/14 A/18 A/19 A/20 A/22 A/23 A/24 A/21

Key

Internally Wired
Bar reference

A

H

H/16 H/15 H/14 H/13 H/12 H/11 H/10 H/9

A/19 H/8 H/7 H/6 H/5 H/4 H/3 H/2 H/1

Bar 10

B

B/1 B/2 B/3 B/4 B/5 B/6 B/7 B/8

A/18 B/9 B/10 B/11 B/12 B/13 B/14 B/15 B/16

Bar 9

J

J/16 J/15 J/14 J/13 J/12 J/11 J/10 J/9

A/16 J/8 J/7 J/6 J/5 J/4 J/3 J/2 J/1

Bar 8

D

D/1 D/2 D/3 D/4 D/5 D/6 D/7 D/8

A/14 D/9 D/10 D/11 D/12 D/13 D/14 D/15 D/16

Bar 7

K

K/16 K/15 K/14 K/13 K/12 K/11 K/10 K/9

A/12 K/8 K/7 K/6 K/5 K/4 K/3 K/2 K/1

Bar 6

E

E/1 E/2 E/3 E/4 E/5 E/6 E/7 E/8

A/10 E/9 E/10 E/11 E/12 E/13 E/14 E/15 E/16

Bar 5

L

L/16 L/15 L/14 L/13 L/12 L/11 L/10 L/9

A/8 L/8 L/7 L/6 L/5 L/4 L/3 L/2 L/1

Bar 4

F

F/1 F/2 F/3 F/4 F/5 F/6 F/7 F/8

A/6 F/9 F/10 F/11 F/12 F/13 F/14 F/15 F/16

Bar 3

M

M/16 M/15 M/14 M/13 M/12 M/11 M/10 M/9

A/4 M/8 M/7 M/6 M/5 M/4 M/3 M/2 M/1

Bar 2

G

G/1 G/2 G/3 G/4 G/5 G/6 G/7 G/8

A/2 G/9 G/10 G/11 G/12 G/13 G/14 G/15 G/16


Bar 1

N

N/12 N/11 N/10 N/9 N/8 N/7

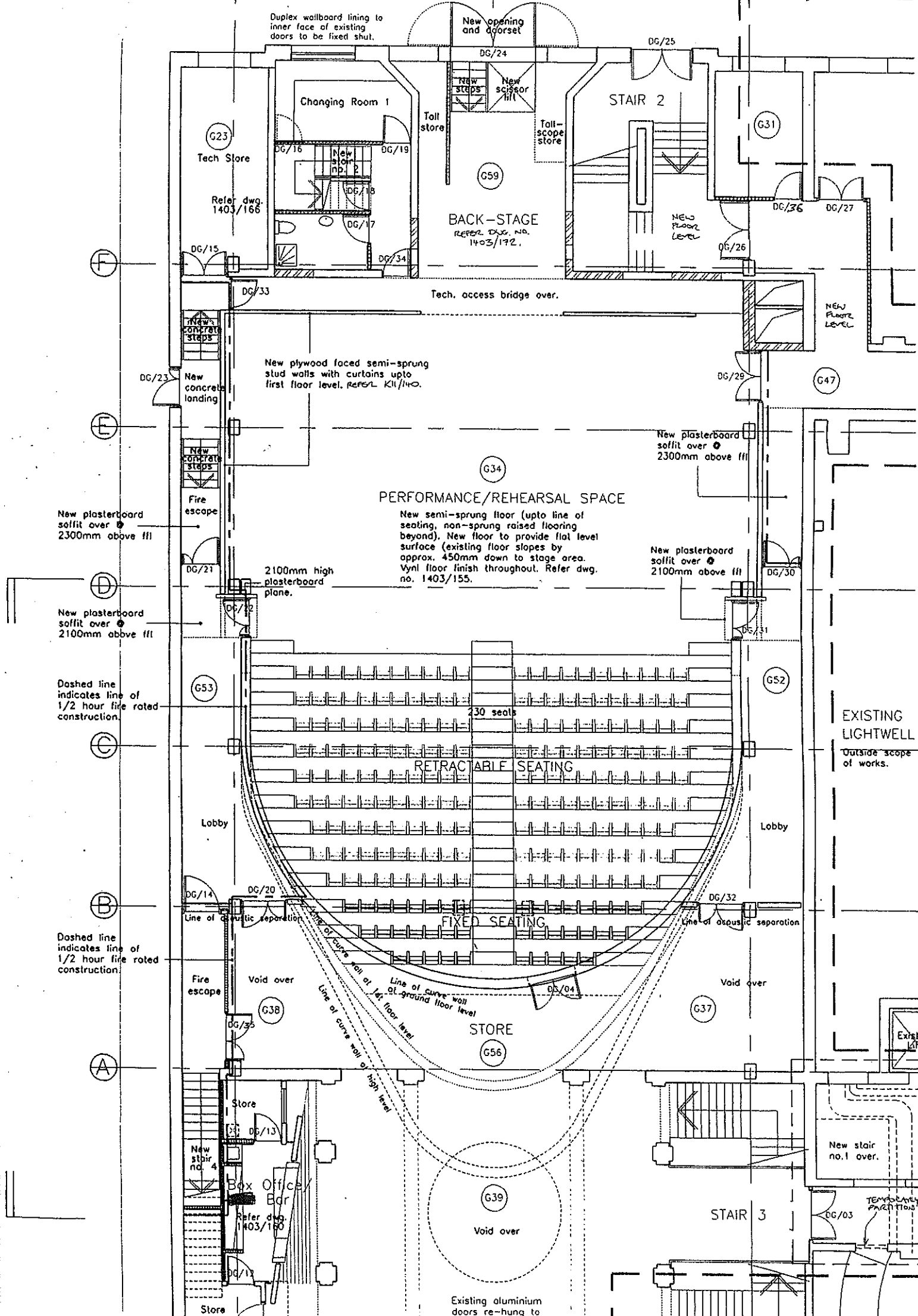
N/6 N/5 N/4 N/3 N/2 N/1

**15 Amp Socket
Outlet**



**Patch Reference
Numbers**

A/22



Duplex wallboard lining to inner face of existing doors to be fixed shut.

New opening and doorset

Changing Room 1

STAIR 2

G23
Tech Store

G59

G31

BACK-STAGE
REFER DWG. NO. 1403/172.

NEW FLOOR LEVEL

Tech. access bridge over.

NEW FLOOR LEVEL

New plywood faced semi-sprung stud walls with curtains upto first floor level. REFER K11/140.

New plasterboard soffit over 2300mm above flt

PERFORMANCE/REHEARSAL SPACE

New semi-sprung floor (upto line of seating, non-sprung raised flooring beyond). New floor to provide flat level surface (existing floor slopes by approx. 450mm down to stage area. Vynl floor finish throughout. Refer dwg. no. 1403/155.

New plasterboard soffit over 2100mm above flt

2100mm high plasterboard plane.

New plasterboard soffit over 2300mm above flt

New plasterboard soffit over 2100mm above flt

Dashed line indicates line of 1/2 hour fire rated construction.

Dashed line indicates line of 1/2 hour fire rated construction.

EXISTING LIGHTWELL
Outside scope of works.

230 seats

RETRACTABLE SEATING

FIXED SEATING

STORE

Lobby

Lobby

Fire escape

Void over

Store

New stair no. 4

Box Office Bar

Refer dwg. 1403/168

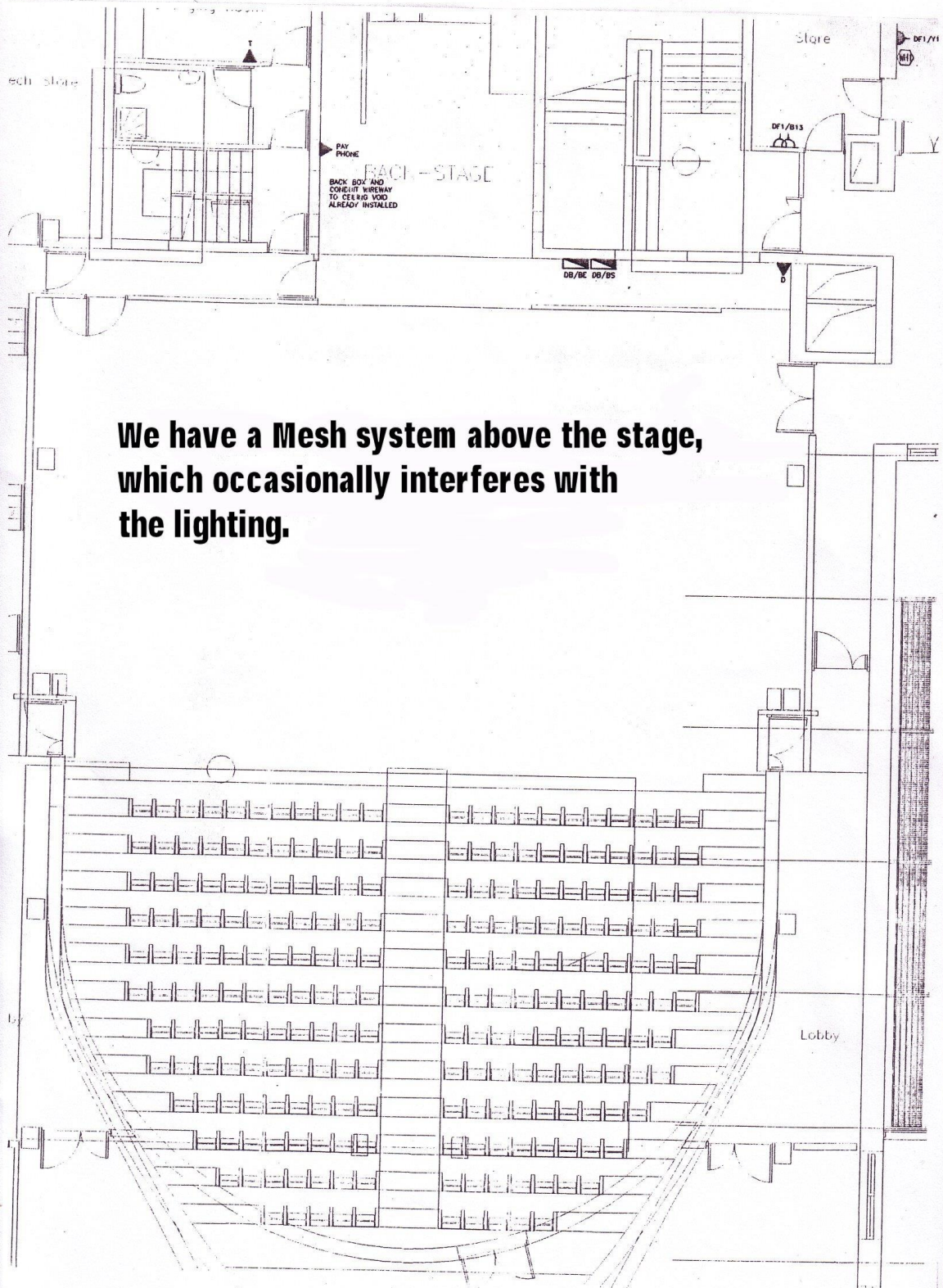
Store

New stair no. 1 over.

TEMPORARY PARTITION

STAIR 3

Existing aluminium doors re-hung to



**We have a Mesh system above the stage,
which occasionally interferes with
the lighting.**

Health and Safety

- Electrical equipment brought into the theatre must have an up to date PAT test Certificate.
- PPE must be worn whilst unloading and working in the grid.
- A Tech Spec must be provided 6 weeks prior to a performance.
- A Risk Assessment must be provided 6 weeks prior to a performance.
- All set/props/materials must be fire retardant.
- Strictly no naked flame allowed.
- Please inform of any use of SFX including haze machines or strobe lighting.
- All visiting technicians must be competent and understand the rules and regulations for working in a theatre.
- H&S regulations must be followed at all times.
- No food or drink allowed onstage. Bottled water only.