

TRANSPORT LINKS

Here's how to get there (all directions from Manchester Piccadilly)



Why not cycle round the trail!
It's free, healthy and good for the planet!
Just be safe and wear a helmet!!!



THE BRIDGEWATER HALL

Train: Deansgate (turn right out of station, walk down Whitworth St, 10 min walk)

Metrolink: St Peter's Square (5 min walk)

Walk: 18 min

THE EDGE

Bus: 85, 86 to Chorlton from Piccadilly.

Bus Stop: Four banks in Chorlton.

Walk: (5 min walk)

Metrolink: East Didsbury Metrolink to Chorlton. Turn right out of the tram stop, walk down Wilbraham Road towards Chorlton. (5 min walk)

MANCHESTER ART GALLERY

Bus: Nearest bus stops are St Peter's Square or Piccadilly Gardens.

Metrolink: St Peter's Square or Market Street stations are the nearest Metrolink stations. Both are on the Altrincham and Eccles lines. (5 min walk)

Walk: 5 min (down Mosley St)

MANCHESTER MUSEUM

Bus: 41, 42, 43, 48, 111, 85, 86, 147 and 250

Bus Stop: The University of Manchester Students Union

Train: Oxford Road. Exit station, turn right onto Oxford Road (15 min walk)

Metrolink: St Peter's Square (15 min walk)

Walk: 20 min

PEOPLE'S HISTORY MUSEUM

Bus: 1, 8, 12, 25, 26, 34, 32, 36, 37, 50, X34

Bus Stop: Bridge Street (2 min walk)

Train: Salford Central (2 min walk)

Metrolink: St Peter's Square (10 min walk)

Walk: 25 min from Piccadilly

THE WHITWORTH

Bus: 15, 41, 42, 43, 140 - 143, 147

Bus Stop: MFL, Oxford Road

Train: Oxford Road (plus 10 min on the bus or 20 min on foot)

Metrolink: St Peter's Square (25 min walk)

Walk: 20-30min from Piccadilly

Z-ARTS

Bus: 250, 256, 263

Bus Stop: Hulme Library

Train: Oxford Road (15 min walk)

Walk: 30 min from Piccadilly

TRAILBLAZERS

Manchester's art & culture map for teenagers

CALLING ALL TEENAGERS!
Blaze a cultural trail around Manchester

GET INVOLVED IN YOUR LOCAL MUSIC/DANCE/THEATRE/LITERATURE CULTURE/ART/HISTORY

MAP INSIDE!



What can you do at these venues?

VENUE GUIDE

Most things are free and within walking distance of city centre Manchester. So tell your friends and enjoy what's on your doorstep. Remember to check venue websites for up to date info about events, workshops and how you can get involved.



MANCHESTER ART GALLERY

www.manchestergalleries.org

Manchester Art Gallery is one of the country's finest art museums, mixing works from the wonderful historic collections with the best international contemporary art - you'll find everything here! There's lots happening with exhibitions, workshops, holiday projects and events and as a teenager you can join the Creative Consultants who are a group of 14-19 year olds who meet monthly to connect with art, be creative and make their mark on the gallery.



The Edge is in the suburb of Chorlton, 15 minutes out of Manchester City Centre. See transport links.

The Edge is a little theatre with big aspirations based in a former Sunday School in Chorlton, South Manchester. With a particular interest in children's theatre, musical theatre and new writing, teenagers can see exciting touring theatre shows as well as shows produced in house by the Edge's very own actors. The Edge also runs workshops and courses including acting, dancing and singing classes for 13-19 year olds and a chance to join the Youth Board.



THE BRIDGEWATER HALL

www.bridgewater-hall.co.uk

Music please! The Bridgewater Hall is Manchester's international concert venue and home to three orchestras: the Halle, BBC Philharmonic and Manchester Camerata. As well as going to concerts, in the holidays and at half term you can take part in a range of music workshops, go behind the scenes on a technical tour, or use your mobile phone to listen to the talking statue of Barbirolli outside the main entrance.



MANCHESTER MUSEUM

www.museum.manchester.ac.uk

See dinosaurs, mummies and live animals, with loads of other great stuff such as Stan the T. Rex and Mahatma the Elephant are a must see! The Junior (8-13) and Senior (14-20) Youth Boards meet monthly organizing projects to get young people involved in the museum and let them see what goes on behind the scenes. Visit their blog: www.mcrnuseumyouthboard.wordpress.com

Budding archaeologists can join the young Archaeologists Club. To find out more visit www.yac-uk.org

PEOPLE'S HISTORY MUSEUM

www.phm.org.uk

Visit the interactive exhibitions about revolution, reform and the history of working people. The galleries are colour coded to represent different ideas such as red for revolution and pink for peace and prosperity! Go behind the scenes in the Textile Conservation Studio and see the museum's collection of trade union banners. PHM run tours around the city centre to see how the museum connects with the city, and during the visit you can discuss and leave your opinions on current political issues.

THE WHITWORTH

www.manchester.ac.uk/whitworth

The Whitworth, Manchester's gallery in the park reopens 14 February 2015. Launching Whitworth Young Contemporaries, a programme developed by, with and for young people.



Z-ARTS

www.z-arts.org

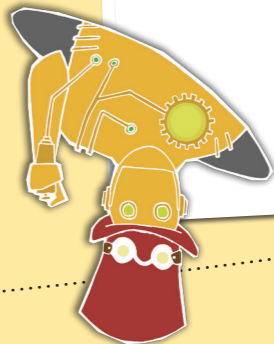
Inspiring Creativity! There's plenty to get involved with at Z-arts whether you want to watch a theatre or dance performance or take part yourself. Join ZYP (Z-arts Young Performers), an acting group for 11-16 yrs that produces its own full scale theatre shows. Get musical with Allsorts the legendary Saturday music collective for budding MC's, singers, songwriters or all abilities (11-19 yrs). Other workshops include Capoeira, street dance and exciting holiday projects all year round.

The Family Arts Campaign is a large scale, national collaborative programme led by the visual and performing arts sectors to increase levels of arts engagement by families. Visit www.familyarts.co.uk

ABOUT FAMILY ARTS CAMPAIGN



THE EDGE
Manchester Road, Chorlton,
M21 9JG



Notes



Z-ARTS
335 Stretford Road,
M15 5ZA



Notes

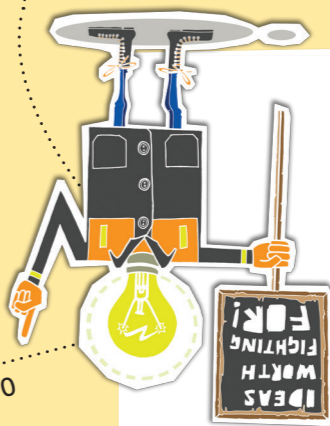
THE BRIDGEWATER HALL
Lower Mosley Street, M2 3WS



Notes

1.7 miles

Beetham Tower



Notes

PEOPLE'S HISTORY MUSEUM
Left Bank, Spinningfields,
M3 5ER

0.6 miles



2.0 miles to the People's History Museum

1.5 miles

1.5 miles to Z-arts



Notes

THE WHITWORTH
OPENING FEB 2015
The University of Manchester,
The Oxford Road, M13 6ER

Notes

0.5 miles

0.5 miles to The Whitworth

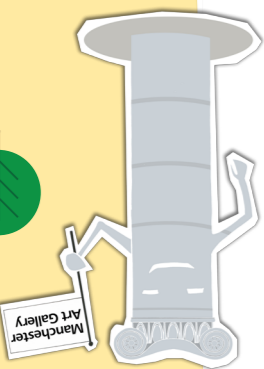
MANCHESTER MUSEUM
The University of Manchester,
The Oxford Rd, M13 9PL



0.6 miles

MANCHESTER CENTRE

1.9 miles to the Art Gallery



Notes



MANCHESTER ART GALLERY
Mosley Street, M2 3JL

0.3 miles

Map not to scale