

TRAILBLAZERS

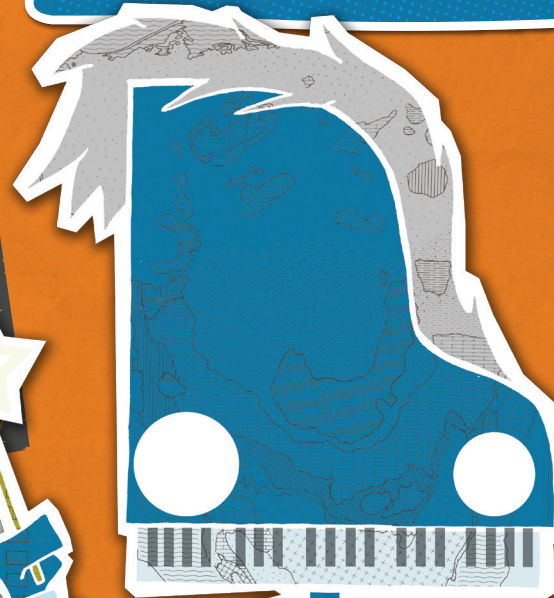
Manchester's art & culture map for teenagers

CALLING ALL
TEENAGERS!

Blaze a cultural trail
around Manchester

MAP
INSIDE!

GET INVOLVED IN YOUR LOCAL
MUSIC/DANCE/THEATRE/LITERATURE
/CULTURE/ART/HISTORY



PEOPLE'S HISTORY MUSEUM

Left Bank, Spinningfields
Manchester M3 3ER

Who did you meet here?

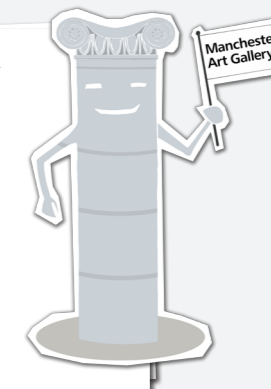


2.7 miles to People's History Museum

MANCHESTER ART GALLERY

Mosley Street, Manchester
M2 3JL

What did you see here?



0.5 mile to the Art Gallery

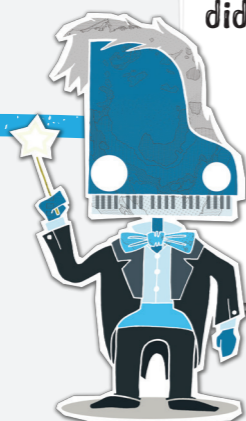
MANCHESTER CENTRE

0.8 miles to The Bridgewater Hall

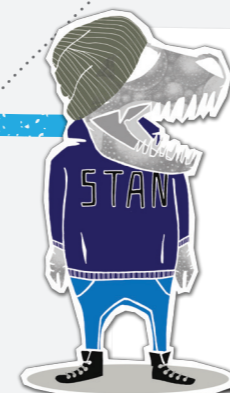
THE BRIDGEWATER HALL

Lower Mosley Street, Manchester
M2 3WS

Which instruments did you see here?



Who did you meet here?

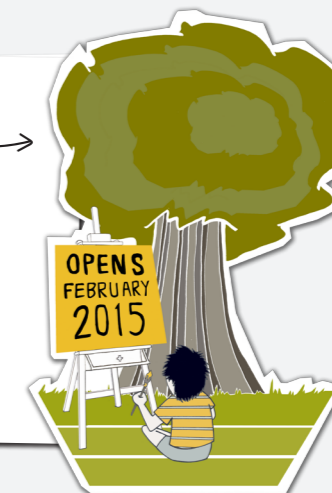


MANCHESTER MUSEUM

The University of Manchester,
Oxford Rd, Manchester
M13 9PL

1.5 mile to The Whitworth

What did you see here?

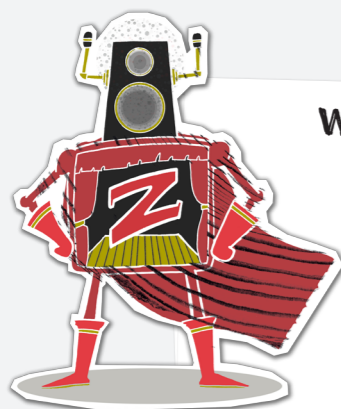


THE WHITWORTH

OPENING FEB 2015
The University of Manchester,
Oxford Road, Manchester
M15 6ER

1.4 miles to Z-arts

What did you do here?



Z-ARTS

335 Stretford Road,
Manchester M15 5ZA

Who performed here?



3.8 miles to The Edge

THE EDGE

Manchester Road, Chorlton
Manchester M21 9JG



ABOUT FAMILY ARTS CAMPAIGN

The Family Arts Campaign is a large scale, national collaborative programme led by the visual and performing arts sectors to increase levels of arts engagement by families. Visit www.familyarts.co.uk

Most things are free and within walking distance of city centre Manchester. So tell your friends and enjoy what's on your doorstep. Remember to check venue websites for up to date info about events, workshops and how you can get involved.

VENUE GUIDE

What can you do at these venues?



THE BRIDGEWATER HALL www.bridgewater-hall.co.uk

Music please! The Bridgewater Hall is Manchester's international concert venue and home to three orchestras: the Hallé, BBC Philharmonic and Manchester Camerata. As well as going to concerts, in the holidays and at half term you can take part in a range of music workshops, go behind the scenes on a technical tour, or use your mobile phone to listen to the talking statue of Barbirolli outside the main entrance.



The Edge is in the suburb of Chorlton, 15 minutes out of Manchester City Centre. See transport links.

THE EDGE www.edgetheatre.co.uk

The Edge is a little theatre with big aspirations based in a former Sunday School in Chorlton, South Manchester. With a particular interest in children's theatre, musical theatre and new writing; teenagers can see exciting touring theatre shows as well as shows produced in house by the Edge's very own actors. The Edge also runs workshops and courses including acting, dancing and singing classes for 13-19 year olds and a chance to join the Youth Board.



MANCHESTER ART GALLERY www.manchestergalleries.org

Manchester Art Gallery is one of the country's finest art museums; mixing works from the wonderful historic collections with the best international contemporary art - you'll find everything here! There's lots happening with exhibitions, workshops, holiday projects and events and as a teenager you can join the Creative Consultants who are a group of 14-19 year olds who meet monthly to connect with art, be creative and make their mark on the gallery.



MANCHESTER MUSEUM www.museum.manchester.ac.uk

See dinosaurs, mummies and live animals, with loads of other great stuff such as Stan the T-Rex and Maharaja the Elephant are a must see! The Junior (8-13) and Senior (14-20) Youth Boards meet monthly organizing projects to get young people involved in the museum and let them see what goes on behind the scenes. Visit their blog: www.mcrmuseumyouthboard.wordpress.com.

Budding archeologists can join the young Archeologists Club. To find out more visit www.yac-uk.org



PEOPLE'S HISTORY MUSEUM www.phm.org.uk

Visit the interactive exhibitions about revolution, reform and the history of working people. The galleries are colour coded to represent different ideas such as red for revolution and pink for peace and prosperity! Go 'behind the scenes' in the Textile Conservation Studio and see the museum's collection of trade union banners. PHM run tours around the city centre to see how the museum connects with the city, and during the visit you can discuss and leave your opinions on current political issues.



THE WHITWORTH (Reopens 14 Feb 2014) www.manchester.ac.uk/whitworth

The Whitworth, Manchester's gallery in the park reopens 14 February 2015. Launching Whitworth Young Contemporaries, a programme developed by, with and for young people.



Z-ARTS www.z-arts.org

Inspiring Creativity! There's plenty to get involved with at Z-arts whether you want to watch a theatre or dance performance or take part yourself. Join ZYP (Z-arts Young Performers), an acting group for 11-16 yrs that produces its own full scale theatre shows. Get musical with Allsorts the legendary Saturday music collective for budding MC's, singers, songwriters of all abilities (11-19 yrs). Other workshops include Capoeira, streetdance and exciting holiday projects all year round.

TRANSPORT LINKS

Here's how to get there (all directions from Manchester Picadilly)



Why not cycle round the trail!
It's free, healthy and good for the planet!
Just be safe and wear a helmet!!!



THE BRIDGEWATER HALL

Train: Deansgate (turn right out of station, walk down Whitworth St. 10 min walk)

Metrolink: St Peter's Square (5 min walk)

Walk: 18 min

THE EDGE

Bus: 85, 86 to Chorlton from Piccadilly.

Bus Stop: Four banks in Chorlton. (5 min walk)

Metrolink: East Didsbury Metrolink to Chorlton. Turn right out of the tram stop, walk down Wilbraham Road towards Chorlton. (5 min walk)

MANCHESTER ART GALLERY

Bus: Nearest bus stops are St Peter's Square or Piccadilly Gardens.

Metrolink: St Peter's Square or Market Street stations are the nearest Metrolink stations. Both are on the Altrincham and Eccles lines. (5 min walk)

Walk: 5 min (down Mosley St)

MANCHESTER MUSEUM

Bus: 41, 42, 43, 48, 111, 85, 86, 147 and 250

Bus Stop: The University of Manchester Students' Union

Train: Oxford Road. Exit station, turn right onto Oxford Road (15 min walk)

Metrolink: St Peter's Square (15 mins walk)

Walk: 20 min

PEOPLE'S HISTORY MUSEUM

Bus: 1, 8, 12, 25, 26, 31, 32, 36, 37, 50, X34

Bus Stop: Bridge Street (2 min walk)

Train: Salford Central (2 mins walk)

Metrolink: St Peter's Square (10 mins walk)

Walk: 25 min from Piccadilly

THE WHITWORTH

Bus: 15, 41, 42, 43, 140 – 143, 147.

Bus Stop: MRI, Oxford Road

Train: Oxford Road (plus 10 minutes on the bus or 20 minutes on foot)

Metrolink: St Peter's Square (25 min walk)

Walk: 20-30min from Piccadilly

Z-ARTS

Bus: 250, 256, 263.

Bus Stop: Hulme Library

Train: Oxford Road (15 min walk)

Walk: 30 min from Piccadilly